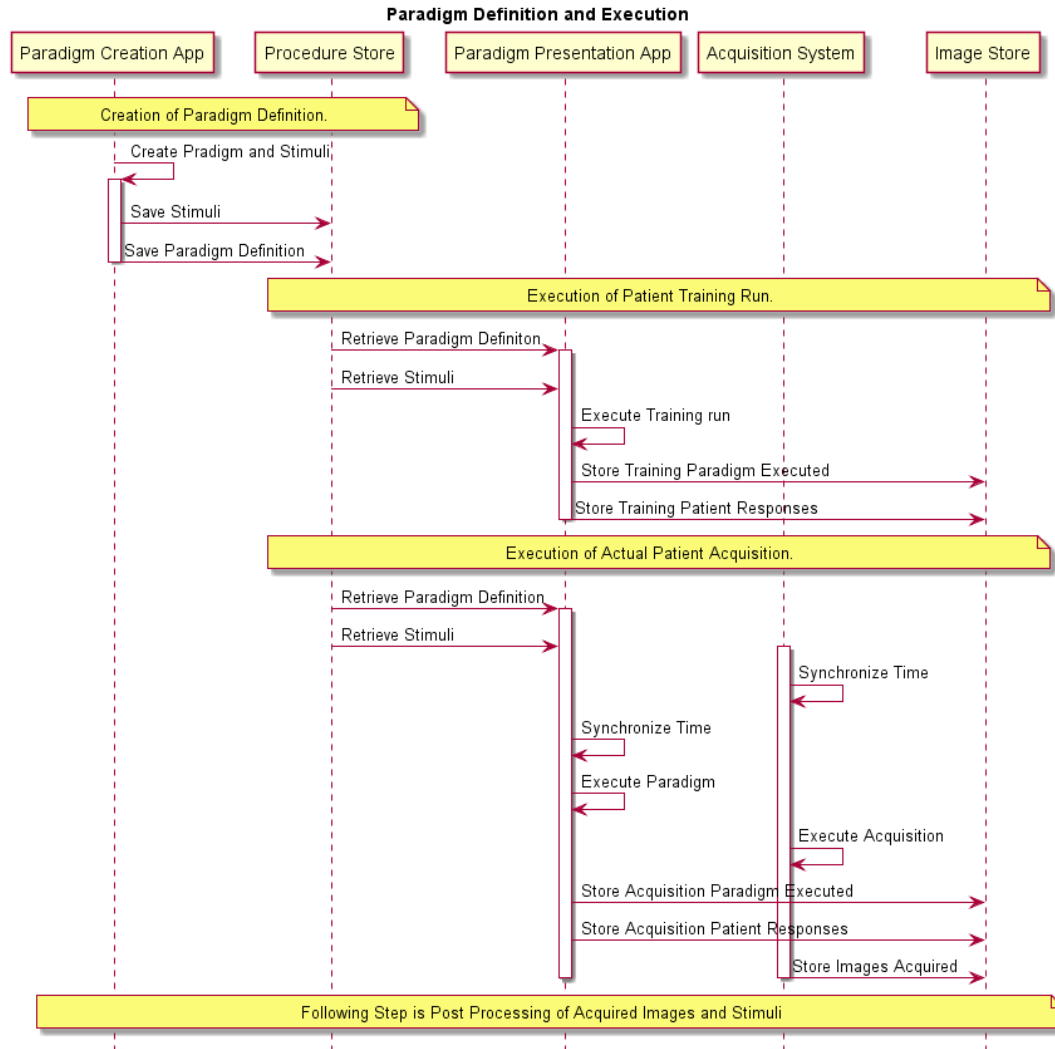


# Supplement 210: Paradigm Protocol Storage

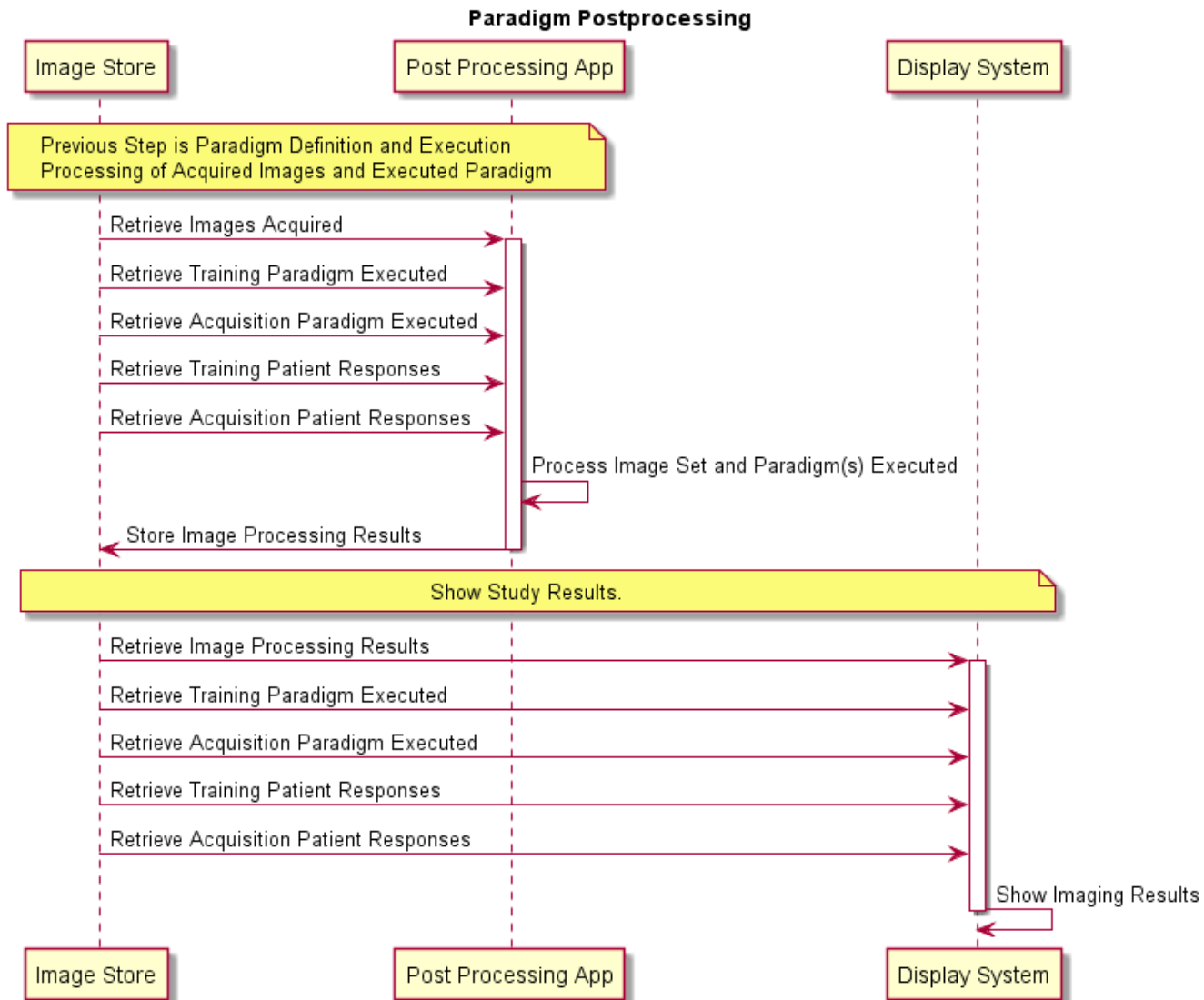
Working Group 16: MRI

- Functional scanning and Paradigms
- Paradigm protocol usage
- Proposal

# Functional scanning and Paradigms



# Functional scanning and Paradigms



## Paradigm usage

- Paradigm describes pattern(s) of stimuli
- Defined version is intended paradigm(s)
- Performed version is actual used paradigm(s)
- Performed version is used by Post-processing application
- Performed version needs to be synchronized with Acquisition of data

Use general Protocol concept to create:

- Defined Paradigm Protocol Storage object
- Performed Paradigm Protocol Storage object

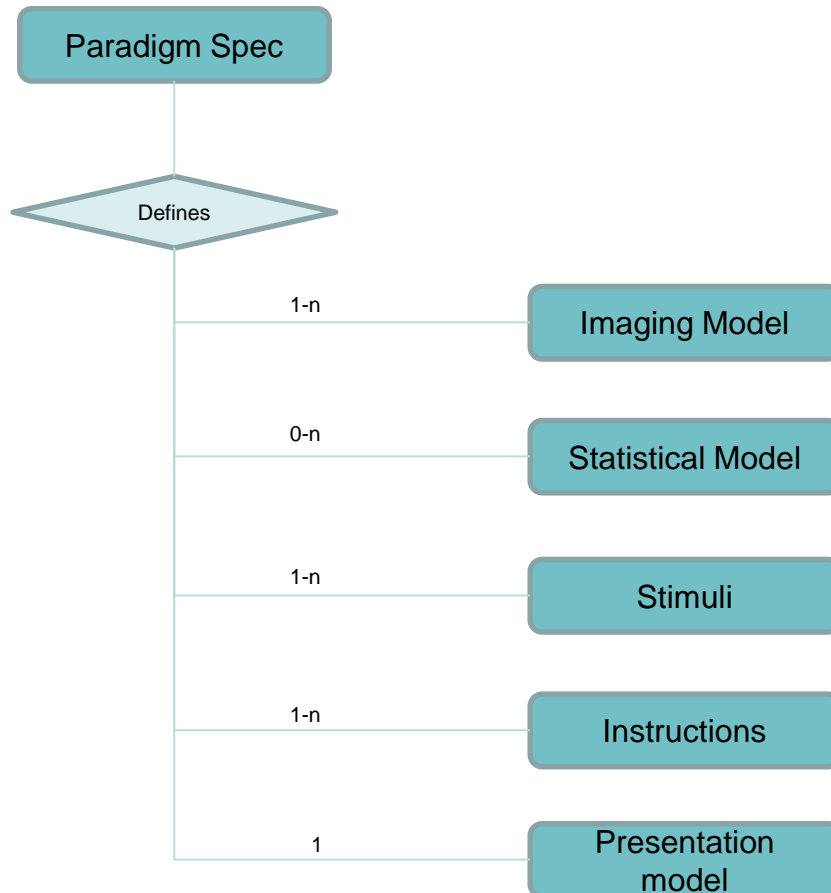
This similar to the CT Protocol Storage objects.

Allowing proper definition and recording of stimuli given to the patient.

# Structure

<u>IE</u>	<u>Module</u>	<u>Reference</u>	<u>Usage</u>	<u>Remark</u>
<u>Equipment</u>	<u>General Equipment</u>	<a href="#">C.7.5.1</a>	<u>M</u>	
	<u>Enhanced General Equipment</u>	<a href="#">C.7.5.2</a>	<u>M</u>	
<u>Procedure Protocol</u>	<u>Protocol Context</u>	<a href="#">C.34.2</a>	<u>M</u>	
	<u>Clinical Trial Context</u>	<a href="#">C.34.4</a>	<u>U</u>	
	<u>Patient Specification</u>	<a href="#">C.34.5</a>	<u>U</u>	
	<u>Equipment Specification</u>	<a href="#">C.34.6</a>	<u>M</u>	
	<u>Instructions</u>	<a href="#">C.34.7</a>	<u>U</u>	Set of Instructions available for the different Protocol Steps
	<u>Patient Positioning</u>	<a href="#">C.34.8</a>	<u>U</u>	
	<u>Defined Paradigm</u>	<a href="#">C.34.c2</a>	<u>U</u>	
	Stimuli	C.34.c4	<u>U</u>	Describing available Stimuli
	Paradigm Acquisition Protocol	C.34.c5	<u>U</u>	Describing Acquisition Parameters related to the Protocol Steps including Stimuli definition to use
	<b><u>Defined Storage</u></b>	<b><a href="#">C.34.13</a></b>	<b><u>U</u></b>	
<u>SOP Common</u>	<a href="#">C.12.1</a>	<u>M</u>		

# Paradigm Definition Model

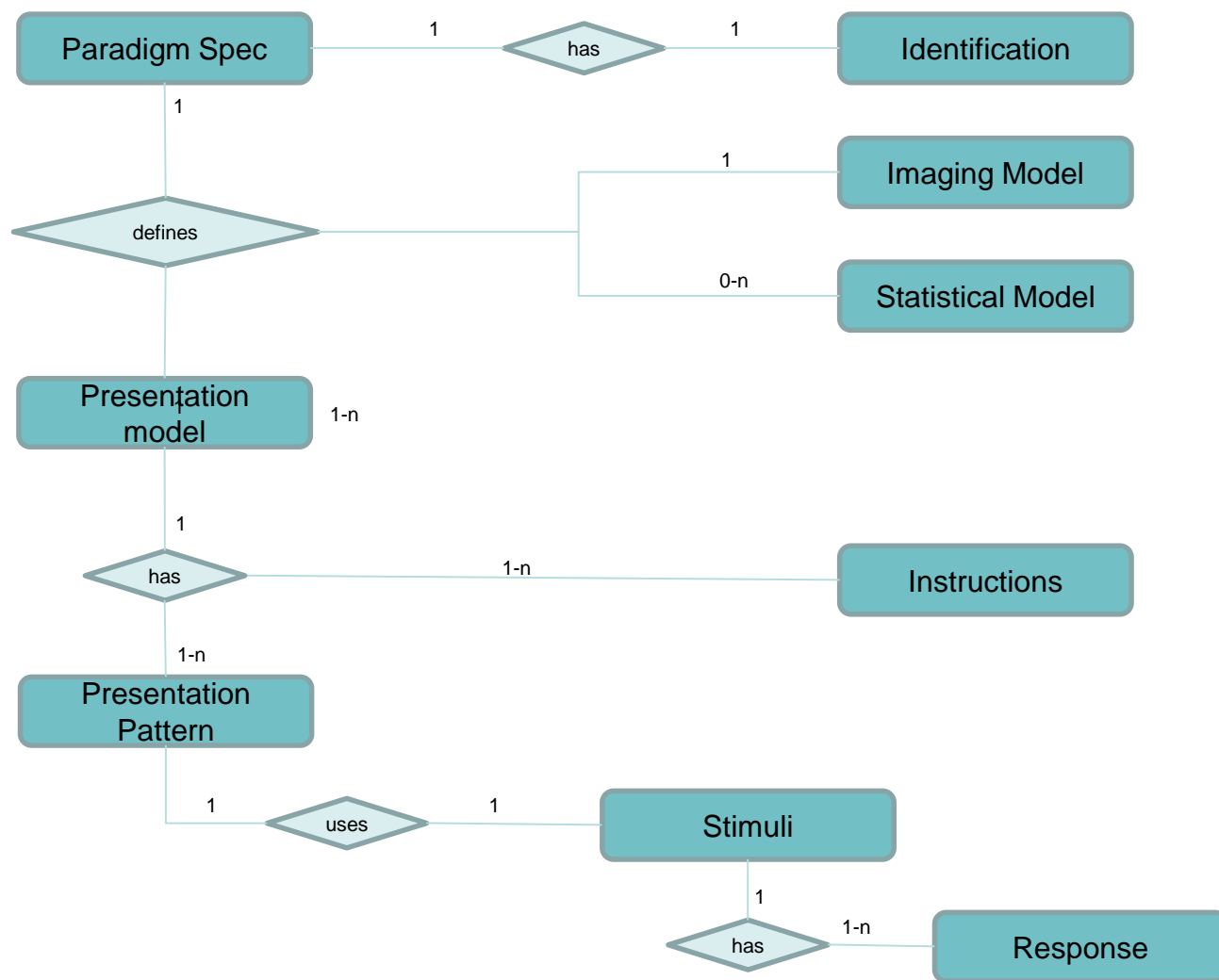


1-n

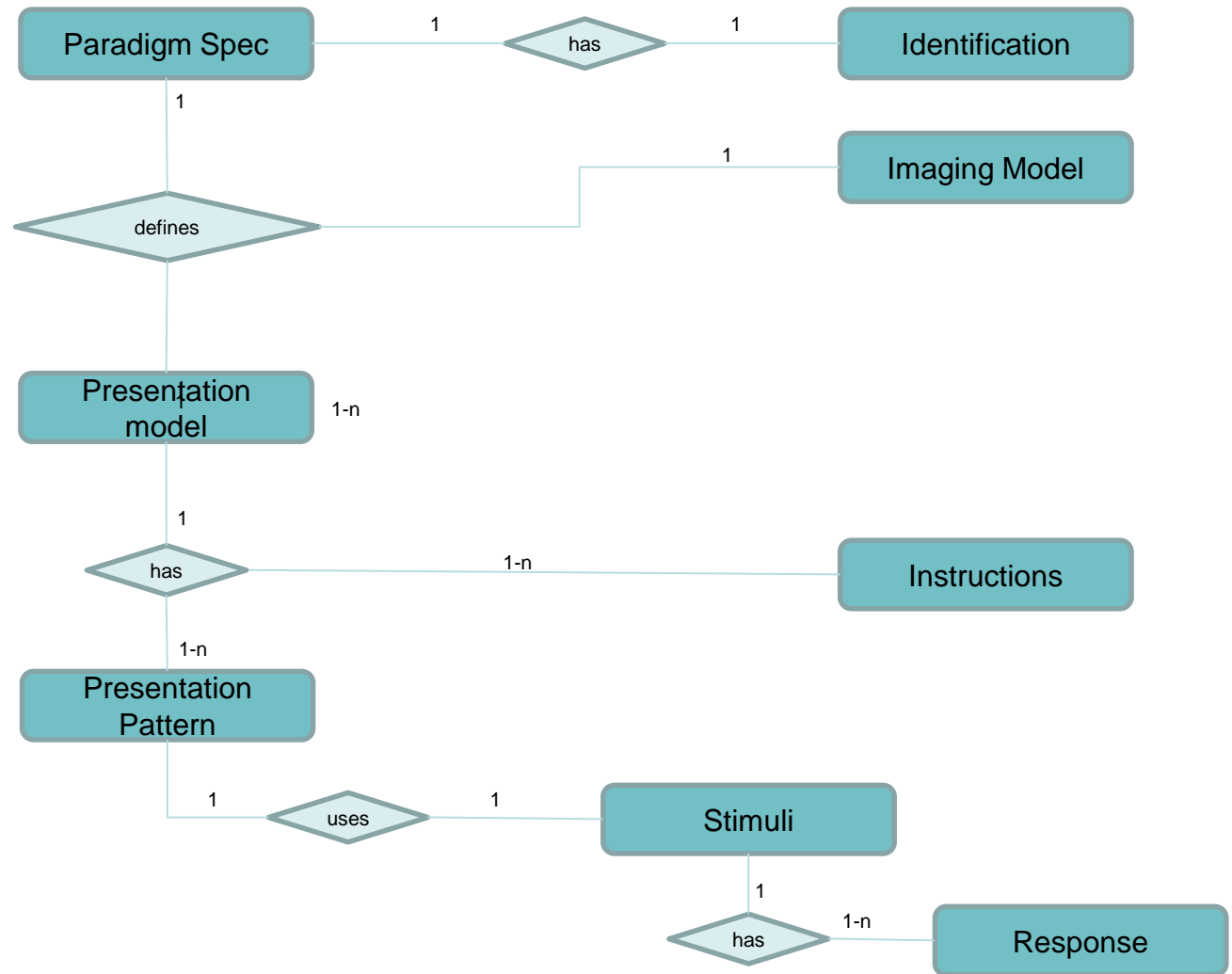
1-1



# Paradigm Definition Model



# Paradigm Executed Model



# Paradigm Definition Model

Paradigm Spec

Describes the Paradigm

Imaging Model

Describes the Imaging model for Scanning

Statistical Model

Describes the Statistical model for Analysis

Stimulus Set

Describes the Stimuli sets used by Presentation model

Instructions

Describes the Instructions used in the Paradigm

Presentation  
model

Describes the Presentation model of the Paradigm

Presentation  
Pattern

Describes the Pattern used for presenting the Stimuli

**Use SR to register Patient responses and physician's observations.**